

State of Wyoming Corner Record

(In compliance with the *CORNER PERPETUATION AND FILING ACT*, Wyoming Statutes, 1997, Section 33-29-140, et. seq., and the Rules and Regulations of the Board of Registration for Professional Engineers and Professional Land Surveyors)

Reverse side of this form may be used if more space is needed.

Record of original survey and citation of source of historical information (if corner is lost or obliterated). Description of corner monumentation evidence found and/or monument and accessories established to perpetuate the location of this corner. Sketch of relative location of monument, accessories, and reference points with course and distance to adjacent corner(s) (if determined in this survey). Method and rationale for reestablishment of lost or obliterated corner.

G.L.O. Record: This corner was not set in the original survey.

Found: No evidence of previous surveys.

Set: No. 6 x 30" rebar with 3 1/4" aluminum cap marked as noted below. Set a 5' steel fence post witness 1' north.

Aluminum Cap Markings

A.V.I. P.C.

S20

W 1/16 ———

S29

1999

P.L.S. 2927

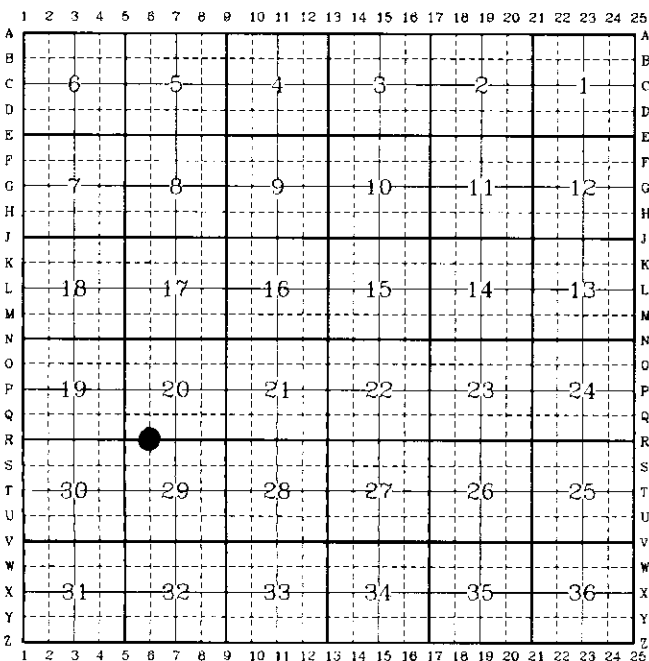


RECORDED 7/19/1999 AT 1:55 PM REC# 256589 BK# 1527 PG# 1053
DEBRA K. LATHROP, CLERK OF LARAMIE COUNTY, WY PAGE 1 OF 1

Date of Field Work: April, 1999

Office Reference: A.V.I. Job No.: 2-2122

CROSS INDEX DIAGRAM



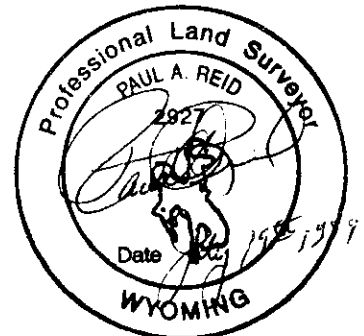
Firm/Agency, Address

Paul A. Reid, P.L.S.
A.V.I., p.c.
2035 Westland Road
Cheyenne, WY 82001

This corner record was prepared by me or under my direction and supervision.

SEAL & SIGNATURE

Telephone Number:
(307) 637-6017



Corner Name: W1/16 S20/S29
SBRPEPLS/PLSW: March 1994

Section: 20

T.13N., R.64W.; 6th P.M. Cross-Index No.: R-6